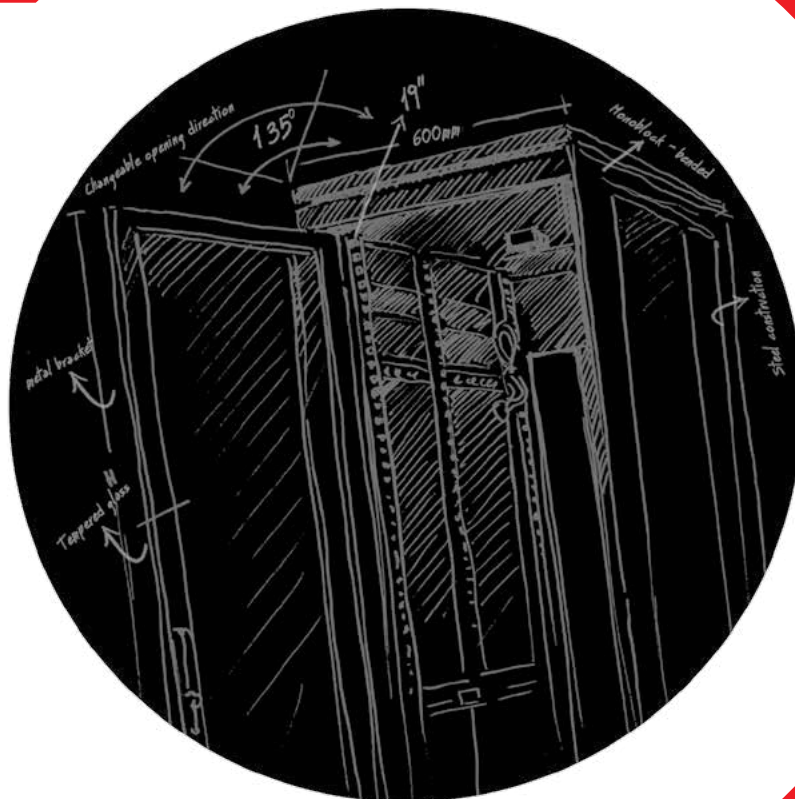


accessories





GÜNKO INDUSTRIAL

www.gunko.com.tr

INDUSTRIAL

Günko Industrial, one of Günko Group companies operating in the metal industry since 1974, was established in 2005.

Its modern technology according to an integrated infrastructure, experience and the needs of the IT world with dynamic staff presence of 19" indoor Racks and accessories, outdoor enclosures, server and data center cabinets.

All production processes are monitored and controlled by the ERP system.

Günko Industrial in the 19" rack industry in 2007 is the first enterprise engaged in the production of the EN standards, has been certified by TSE in 2010.

Its processes related to using the TS EN ISO 9001 Quality Management System and resources more effectively and efficiently control is continuous improvement.

Günko Industrial, within company boundaries, secure workspaces and safety work-related accidents by adopting a culture of prevention policies, to keep under control under the legal requirements and practices regarding enforcement of environmental legislation aims.

Günko Industrial pride of being the preferred brand comes from the excellent services offered to customers.



elegant pro

server rack

elegant net

open

rack

cabinets

pro case

soho rack

accessories

fiber optic

elegant wall

Elegant Wall

Elegant pro

Elegant Net

cabinets

Server

Accessories

fiber optic

Soho

Open

Pro case Rack



woooow!!!

Günko desinged welded frame rack cabinets



We are aware of our responsibilities as Gunko industrial.

Elegant robust structure consist by front and rear welded frames.

19" Elegant Net & Elegant Pro rack cabinets are designed to meet the needs of high density network applications and it is engineered for superior weight capacity with welded construction.



%100 Recyclable packaging Materials

Elegant flat pack racks
less carbon footprint

Green advantages of fat pack

Do not forget your environmental responsibility

Compared to pre-assemble products flat pack rack cabinets is more environmentally conscious and it cuts down on size, which cuts down on shipping costs and also reduces the carbon footprint for a green Nature environment.



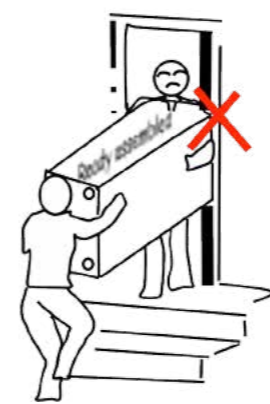
Elegant flat pack Rack cabinets enables consumers to assemble a product themselves with a manual instruction, saving significant amounts of money for the customers by reducing shipping and storage costs and for the consumers it offers an easier shape / size to carry.

You can not change the structure of the buildings but you can order Flat pack Elegant rack (all in 1 pack)

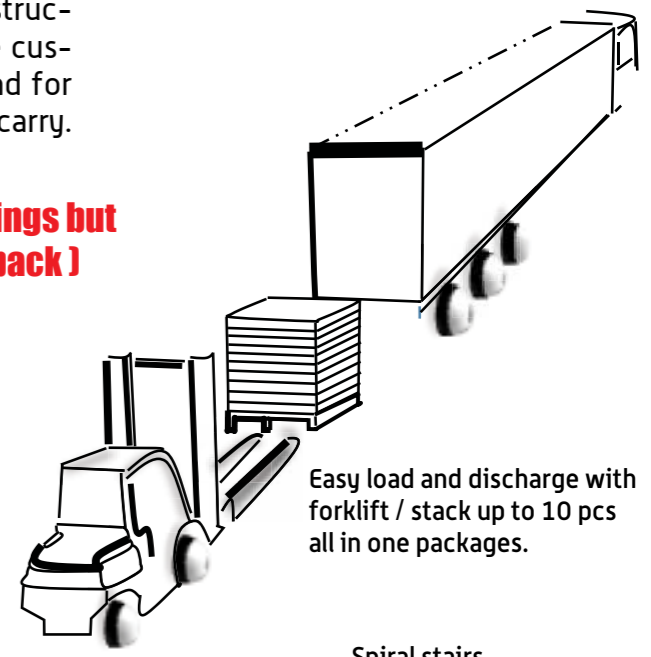
Easy transportation for retail customers



Door / Elevator



Thanks to Flat pack construction it is possible to bring them also into places with difficult access, e.g. basement or attic, narrow door-openings or spiral stairs.



Easy load and discharge with forklift / stack up to 10 pcs all in one packages.

Spiral stairs



accessories



accessories

FIXED SHELVES



Fixed Shelf
D 600 mm

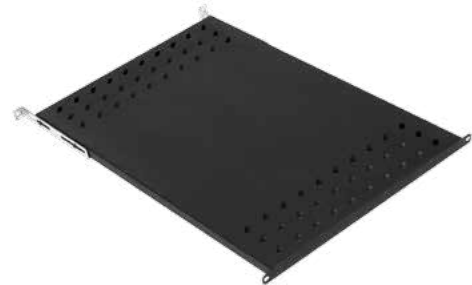
- 19" Rack mountable
- 4 fixing point
- No barrier for airflow inside of rack with slotted structure
- 50 kg static load carrying capacity



Fixed Shelf
D 800 mm

Color Options

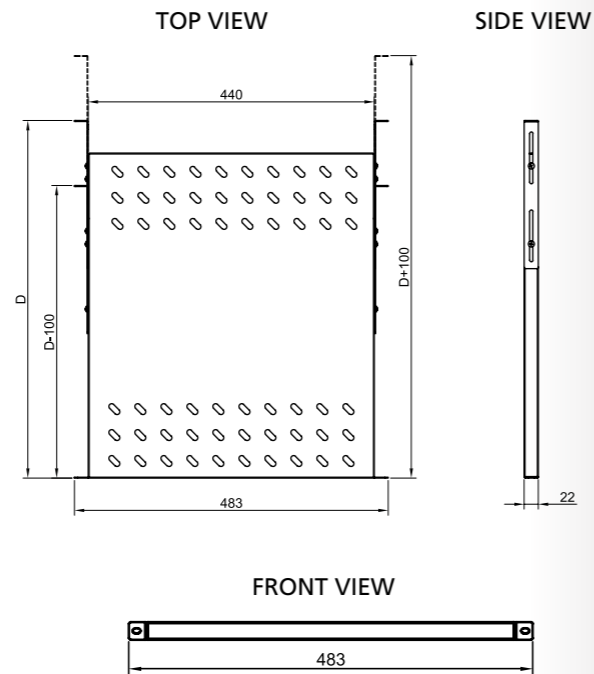
- RAL 9005 - Siyah (Standart)
- RAL 7035 - Açık Gri (Opsiyonel)



Fixed Shelf
D 1000 mm



Fixed Shelf
D 1000 mm
(Heavy duty type)



FIXED SHELVES

Product Code	Product Description	Width (W) (mm)	Depth (D) (mm)	Height (H) (mm)	Weight (Kg)
PA CC RK SR 60	1/2U Fixed Shelf - 600 mm Depth Cabinets	483	360	22	1,80
PA CC RK SR 80	1/2U Fixed Shelf - 800 mm Depth Cabinets	483	560	22	2,80
PA CC RK SR 10	1/2U Fixed Shelf - 1000 mm Depth Cabinets	483	760	22	3,40
PA CC RK SR 10 HD	1U Fixed Shelf- 1000 mm Depth Cabinets (Heavy Duty Type)	483	760	44	5,40

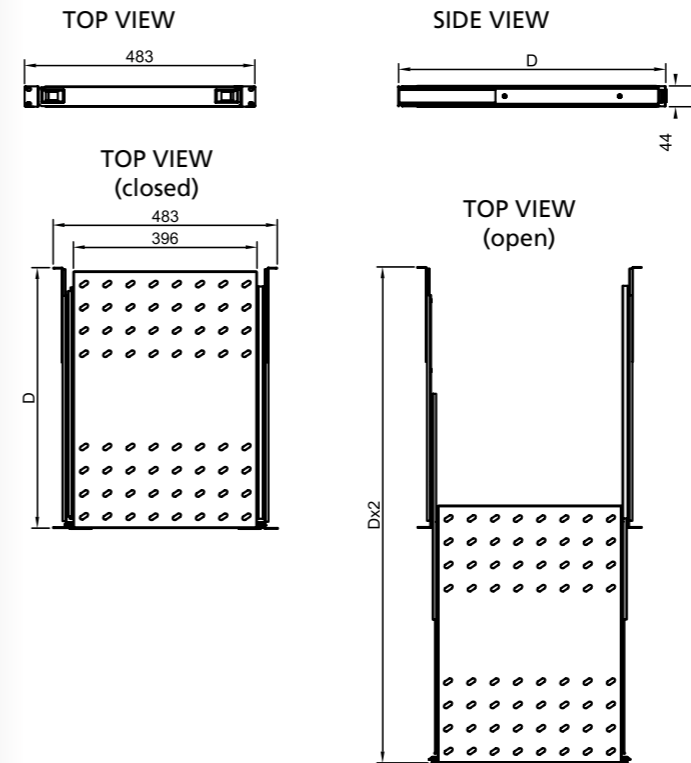
**CC Means=Color Code, BL=Rall 9005 Black, LG=Rall 7035 Light Gray

SLIDING SHELVES

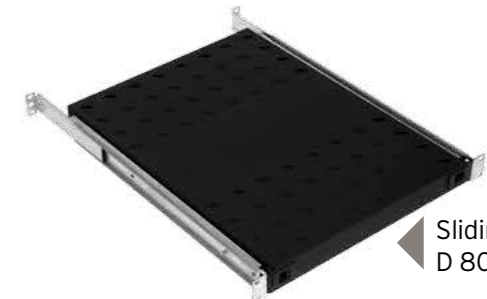
- 19" Rack mountable
- 4 fixing point
- No barrier for airflow inside of rack with slotted structure
- 35 kg static load carrying capacity
- Shelves could be moved along the depth of cabinet
- Adjustable depth by 100mm with rear moveable L bracket throughout front and rear 19" rails.
- The side latch

Color Options

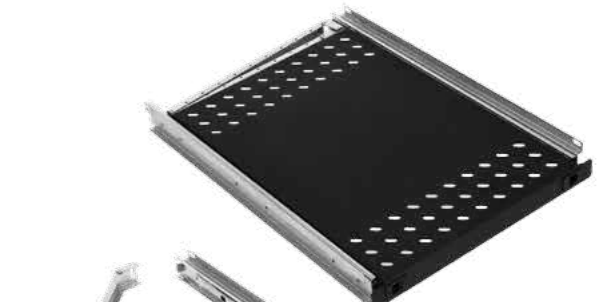
- RAL 9005 - Siyah (Standart)
- RAL 7035 - Açık Gri (Opsiyonel)



Sliding Shelf
D 600 mm



Sliding Shelf
D 800 mm



Sliding Shelf
D 1000 mm



Sliding Shelves
(Heavy Duty Type)
D 1000 mm

SLIDING SHELVES

Product Code	Product Description	Width (W) (mm)	Depth (D) (mm)	Height (H) (mm)	Weight (Kg)
PA CC RK HR 60	Sliding Shelves 600 mm Depth Cabinets	483	360	44	2,80
PA CC RK HR 80	Sliding Shelves 800 mm Depth Cabinets	483	560	44	4,00
PA CC RK HR 10	Sliding Shelves 1000 mm Depth Cabinets	483	760	44	5,00
PA CC RK HR 10 HD	Sliding Shelves 1000 mm Depth Cabinets (Heavy Duty Type)	483	760	44	6,30

**CC Means=Color Code, BL=Rall 9005 Black, LG=Rall 7035 Light Gray

CANTILEVER SHELVES



Rack Mount Shelf
D 200 mm



Rack Mount Shelf
D 250 mm



Rack Mount Shelf
D 350 mm

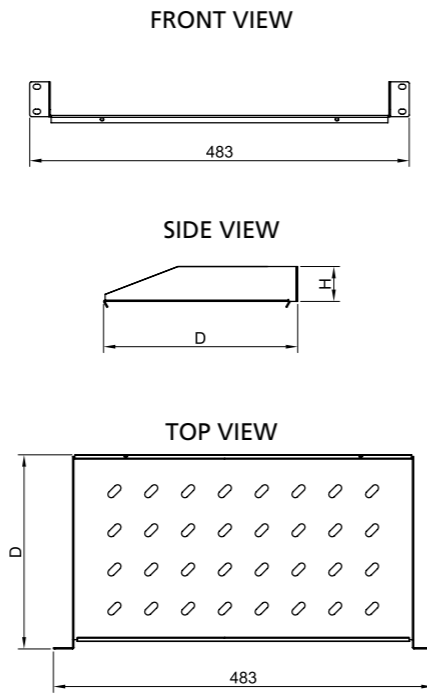


Rack Mount Shelf
D 150 mm

- 19" Rack mountable
- No barrier for airflow inside of rack with slotted structure
- 50kg static load carrying capacity

Color Options

- RAL 7035 - Light Gray (Standard)
- RAL 9005 - Signal Black (Optional)



CANTILEVER SHELVES

Product Code	Product Description	Width (W) (mm)	Depth (D) (mm)	Height (H) (mm)	Weight (Kg)
PA CC RK MR 1U 20	1U 19" D=200 mm Cantilever Shelves	483	200	44	1,25
PA CC RK MR 1U 25	1U 19" D=250 mm Cantilever Shelves	483	250	44	1,50
PA CC RK MR 1U 35	1U 19" D=350 mm Cantilever Shelves	483	350	44	2,10
PA CC RK MR 2U 30	2U 19" D=300 mm Cantilever Shelves	483	300	88	2,00
PA CC RK MR 2U 35	2U 19" D=350 mm Cantilever Shelves	483	350	88	2,30
PA CC RK MR 2U 40	2U 19" D=400 mm Cantilever Shelves	483	400	88	2,50
PA CC RK MR 3U 40	3U 19" D=400 mm Cantilever Shelves	483	400	132	3,00
PA CC RK MR YU 1015	1/2U 10" D=150 mm Cantilever Shelves	483	150	22	0,40

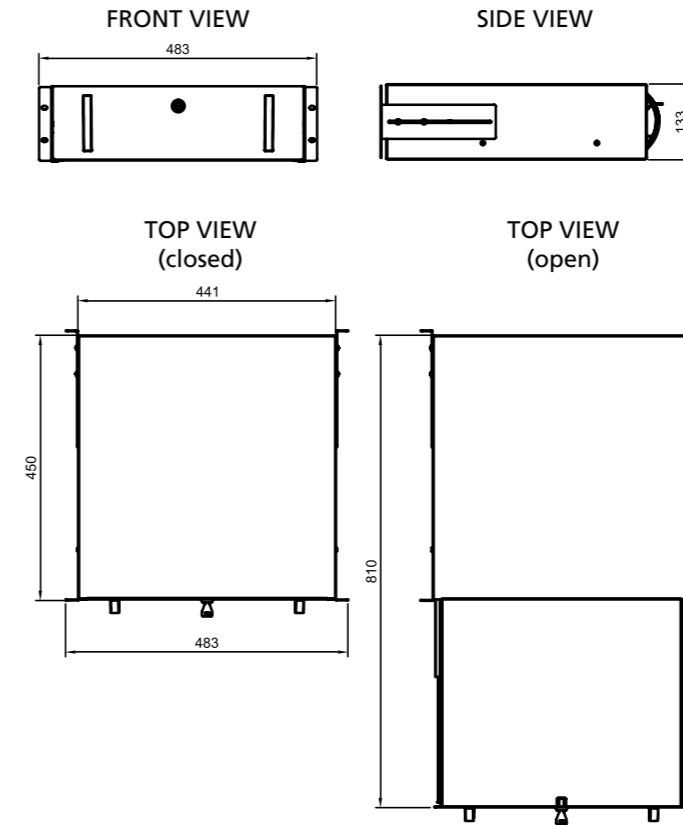
**CC Means=Color Code, BL=Rail 9005 Black, LG=Rail 7035 Light Gray

DRAWERS

- 19" SRackh moou nStabelerisi
- 3U Height (177mm)
- 4 fixing point
- Lockable with single point lock
- 50 kg static load carrying capacity
- Adjustable depth by 60mm with rear moveable L bracket throughout front and rear 19" rails.

Color Options

- RAL 7035 - Light Gray (Standard)
- RAL 9005 - Signal Black (Optional)



DRAWERS

Product Code	Product Description	Width (W) (mm)	Depth (D) (mm)	Height (H) (mm)	Weight (Kg)
PA CC RK CM 2U 45	2U 19" Drawers D=450 mm	483	450	88	8,00
PA CC RK CM 3U 45	3U 19" Drawers D=450 mm	483	450	133	10,50

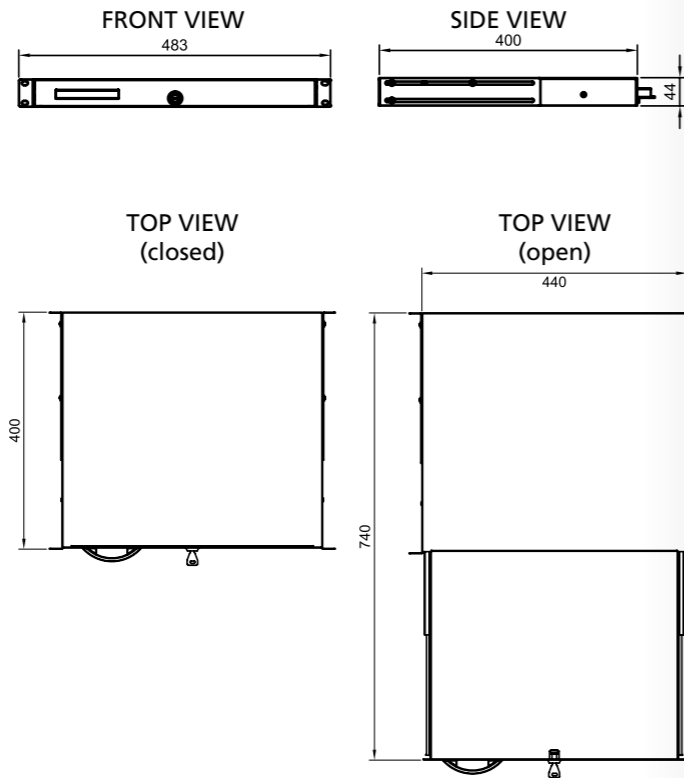
**CC Means=Color Code, BL=Rail 9005 Black, LG=Rail 7035 Light Gray

1U KEYBOARD DRAWER

- 19" Rack mountable
- 1U Height (44mm)
- 4 fixing point
- Lockable with single point lock
- 25kg static load carrying capacity
- Adjustable depth by 60mm with rear moveable L bracket throughout front and rear 19" rails.

Color Options

- RAL 9005 - Black (Standard)
- RAL 7035 - White (Optional)



1U KEYBOARD DRAWER

Product Code	Product Description	Width (W) (mm)	Depth (D) (mm)	Height (H) (mm)	Weight (Kg)
PA CC RK CM 1U 45	1U 19" Keyboard Drawers	483	400	44	5.70

**CC Means=Color Code, BL=Rail 9005 Black, LG=Rail 7035 Light Gray

HORIZONTAL CABLE ORGANIZERS

- 19" Rack mountable
- Metal or plastic hooks
- User friendly design

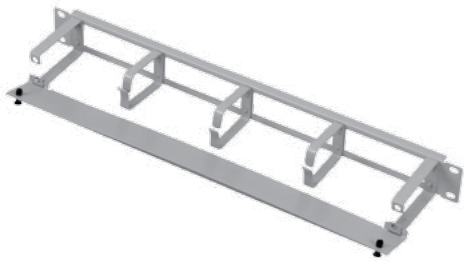


CABLE ORGANIZERS

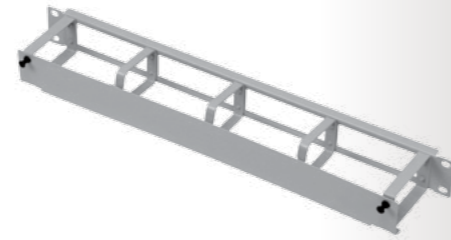
Product Code	Product Description	Width (W) (mm)	Depth (D) (mm)	Height (H) (mm)	Weight (Kg)
PA CC ORG YO 1U	1U 19" Horizontal Organizer Metal Hooks	483	80	44	0,50
PA CC ORG YO 2U	2U 19" Horizontal Organizer Metal Hooks	483	80	88	0,80
PA CC ORG YOD 1U	1U 19" Horizontal Organizer Metal Hooks - Slots	483	80	44	0,40
PA CC ORG YOD 2U	2U 19" Horizontal Organizer Metal Hooks - Slots	483	80	88	0,70
PA CC ORG FRP 1U	1U 19" Brushed Cable Organizer	483	100	44	0,80
PA CC ORG KDF 1U	1U 19" Brushed Cable Organizer	483	120	44	0,90
PA CC ORG KDF YU	1/2U 19" Brushed Cable Organizer	483	120	22	0,45

**CC Means=Color Code, BL=Rail 9005 Black, LG=Rail 7035 Light Gray

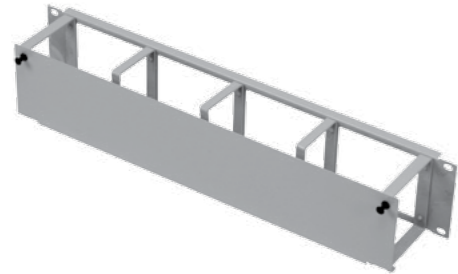
HORIZONTAL CABLE ORGANIZERS



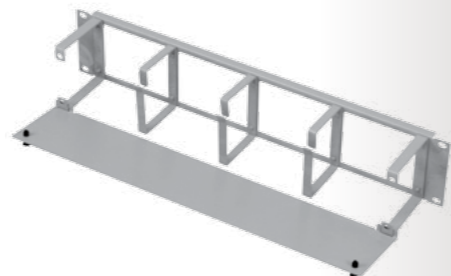
1U 19" Covered Horizontal Organizer with metal hook



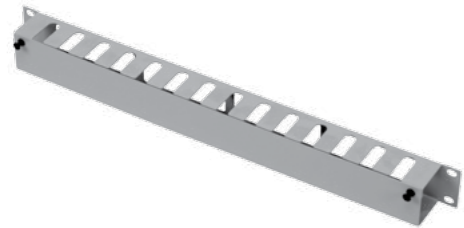
2U 19" Covered Horizontal Organizer with metal hook



1U 19" Covered Horizontal Organizer



2U 19" Covered Horizontal Organizer



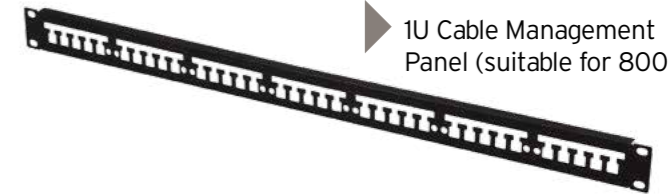
HORIZONTAL CABLE ORGANIZERS



1U 19" Horizontal Organizers with 5 plastic hook

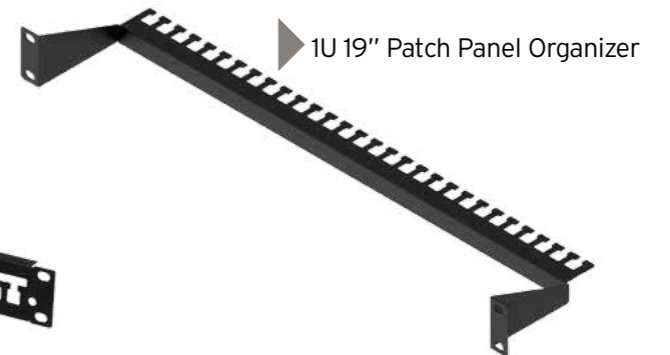


Metal Cable Management Hook



1U Cable Management Panel (suitable for 800mm depth)

1U 19" Cable Management Panel



1U 19" Patch Panel Organizer

HORIZONTAL ORGANIZERS

Product Code	Product Description	Width (W) (mm)	Depth (D) (mm)	Height (H) (mm)	Weight (Kg)
PA CC ORG KYOK 1U	1U 19" Covered Horizontal Organizer With Metal Hook	483	80	44	0,70
PA CC ORG KYOK 2U	2U 19" Covered Horizontal Organizer With Metal Hook	483	80	88	0,90
PA CC ORG KYOT 1U	1U 19" Covered Horizontal Organizer	483	80	44	0,50
PA CC ORG KYOT 2U	2U 19" Covered Horizontal Organizer	483	80	88	0,90

**CC Means=Color Code, BL=Rall 9005 Black, LG=Rall 7035 Light Gray

HORIZONTAL ORGANIZERS

Product Code	Product Description	Width (W) (mm)	Depth (D) (mm)	Height (H) (mm)	Weight (Kg)
PA CC ORG YOPK 1U	1U 19" Horizontal Organizers With 5 Plastic Hook	483	80	44	0,40
PA CC ORG YOPK 2U	2U 19" Horizontal Organizers With 10 Plastic Hook	483	80	88	0,60
PA CC ORG KDTR 1U	1U 19" Cable Management Hook	483	10	44	0,10
PA CC ORG KDTR 1U 80	1U Cable Management Panel (Suitable For 800mm Depth Cabinet)	468	10	44	0,30
PA CC ORG KDTR 1U 10	1U Cable Management Panel (Suitable For 600mm Depth Cabinet)	668	10	44	0,20
PA CC ORG KDK	1U Metal Cable Management Hook	44	20	70	0,30
PA CC ORG PPO 1U	1U 19" Patch Panel Organizer	483	110	44	0,20

**CC Means=Color Code, BL=Rall 9005 Black, LG=Rall 7035 Light Gray

VERTICAL CABLE ORGANIZERS



VERTICAL ORGANIZERS

Product Code	Product Description	Width (W) (mm)	Depth (D) (mm)	Height (H) (mm)	Weight (Kg)
PA CC ORG 16 V	16U Vertical Cable Organizer	100	100	630	5,50
PA CC ORG 20 V	20U Vertical Cable Organizer	100	100	808	7,00
PA CC ORG 22 V	22U Vertical Cable Organizer	100	100	897	8,00
PA CC ORG 26 V	26U Vertical Cable Organizer	100	100	1120	10,00
PA CC ORG 32 V	32U Vertical Cable Organizer	100	100	1340	12,00
PA CC ORG 36 V	36U Vertical Cable Organizer	100	100	1518	13,00
PA CC ORG 42 V	42U Vertical Cable Organizer	100	100	1878	15,00
PA CC ORG 45 V	44U Vertical Cable Organizer	100	100	1918	16,00
PA CC ORG 47 V	47U Vertical Cable Organizer	100	100	2007	17,50

Vertical cable management panels are suitable only for w: 800 mm cabinet. 1set 2pcs Left/Right

VERTICAL CABLE ORGANIZERS



VERTICAL ORGANIZER WITH SLIDING RAILS AND COVERED

Ürün Kodu	Product Description	Width (W) (mm)	Depth (D) (mm)	Height (H) (mm)	Weight (Kg)
PA CC ORG 16 VOT	16U Vertical Organizer With Sliding Rails And Covered	60	70	661	1,00
PA CC ORG 20 VOT	20U Vertical Organizer With Sliding Rails And Covered	60	70	840	1,20
PA CC ORG 22 VOT	22U Vertical Organizer With Sliding Rails And Covered	60	70	928	1,30
PA CC ORG 26 VOT	26U Vertical Organizer With Sliding Rails And Covered	60	70	1106	1,60
PA CC ORG 32 VOT	32U Vertical Organizer With Sliding Rails And Covered	60	70	1372	2,00
PA CC ORG 36 VOT	36U Vertical Organizer With Sliding Rails And Covered	60	70	1550	2,20
PA CC ORG 42 VOT	42U Vertical Organizer With Sliding Rails And Covered	60	70	1816	2,60
PA CC ORG 45 VOT	44U Vertical Organizer With Sliding Rails And Covered	60	70	1905	2,70
PA CC ORG 47 VOT	47U Vertical Organizer With Sliding Rails And Covered	60	70	2039	2,90

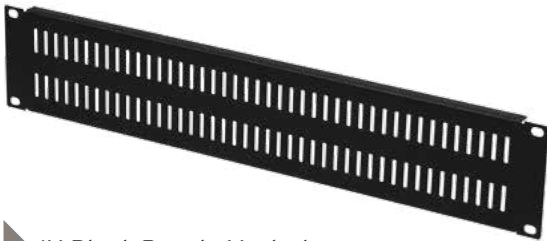
VERTICAL CABLE TRAYS

Product Code	Product Description	Width (W) (mm)	Depth (D) (mm)	Height (H) (mm)	Weight (Kg)
PA GL ORG 16 VCT	16U Vertical Cable Tray	100	10	720	10,20
PA GL ORG 20 VCT	20U Vertical Cable Tray	100	10	892	12,80
PA GL ORG 22 VCT	22U Vertical Cable Tray	100	10	981	14,00
PA GL ORG 26 VCT	26U Vertical Cable Tray	100	10	1159	16,80
PA GL ORG 32 VCT	32U Vertical Cable Tray	100	10	1426	20,80
PA GL ORG 36 VCT	36U Vertical Cable Tray	100	10	1600	23,50
PA GL ORG 42 VCT	42U Vertical Cable Tray	100	10	1870	27,50
PA GL ORG 45 VCT	44U Vertical Cable Tray	100	10	2003	28,80
PA GL ORG 47 VCT	47U Vertical Cable Tray	100	10	2092	30,80

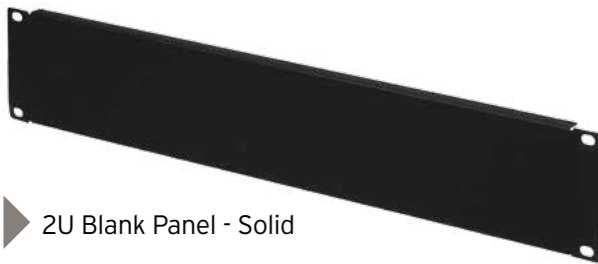
BLANK PANELS



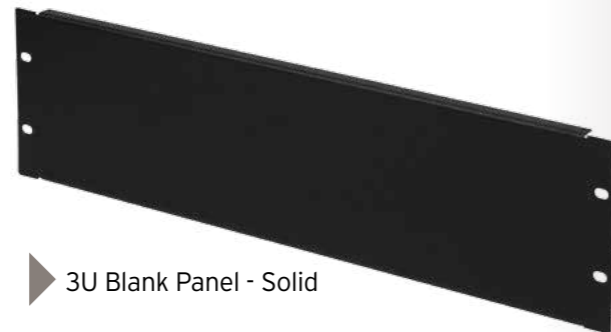
▶ 1U Blank Panel - Solid



▶ 1U Blank Panel - Vented



▶ 2U Blank Panel - Solid



▶ 3U Blank Panel - Solid

- Designed for preventing air recirculation by occupying unused rack space.
- 19" Rack mountable, solid or vented type

Color Options

- RAL 9005 - Black (Standard)
- RAL 7035 - White (Optional)

BLANK PANELS

Product Code	Product Description	Width (W) (mm)	Depth (D) (mm)	Height (H) (mm)	Weight (Kg)
PA CC RK KP 01	1U 19" Blank Panel	483	12	44	0,30
PA CC RK KP 02	2U 19" Blank Panel	483	12	88	0,50
PA CC RK KP 03	3U 19" Blank Panel	483	12	133	0,70
PA CC RK KP 04	4U 19" Blank Panel	483	12	177	0,90
PA CC RK KP 05	5U 19" Blank Panel	483	12	221,5	1,10
PA CC RK KP 06	6U 19" Blank Panel	483	12	266	1,30
PA CC RK KPD 01	1U 19" Blank Panel-Vented	483	12	44	0,30
PA CC RK KPD 02	2U 19" Blank Panel-Vented	483	12	88	0,50

**CC Means=Color Code, BL=Rall 9005 Black, LG=Rall 7035 Light Gray

CASTORS & LEVELLING FEETS

- Polyamid wheels
- 360° Rotatable
- One set include 2 pcs castors with brake and 2 pcs without brake
- Leveling feets made from metal and PVC



CASTER SET & LEVELLING FEETS

Product Code	Product Description	Width (W) (mm)	Depth (D) (mm)	Height (H) (mm)	Load Carrying Capacity (unit/kg)	Weight (Kg)
PA 00 FS TK 22	Castor Levelling Group 2 ea.lockable,rotatable	80	90	80	150	2,20
PA 00 WL TK 22	Wall Mounted Cabinets Castor Group 2 ea.lockable,rotatable	80	50	70	100	1,00
PA 00 KR PN 00	Levelling feet for cabinets (M10)	45	-	100	250	0,30

**CC Means=Color Code, BL=Rall 9005 Black, LG=Rall 7035 Light Gray

PLINTH



▶ Plinth - Solid

- Designed for increasing of height distance between floor and rack and/or fixing onto floor and/or provide empty area for cable reserve and/or passive air ventilation.
- There are 3 types, solid, brushed or louvered.

Color Options

- RAL 9005 - Black (Standard)
- RAL 7035 - White (Optional)



▶ Plinth - Brushed



▶ Plinth - Louvered

PLINTH

Product Code	Product Description	Width (W) (mm)	Depth (D) (mm)	Height (H) (mm)	Weight (Kg)
PA CC BZ 66	600 mm x 600 mm Plinth - Solid	600	600	110	6,50
PA CC BZ 68	600 mm x 800 mm Plinth - Solid	600	800	110	7,50
PA CC BZ 88	600 mm x 1000 mm Plinth - Solid	800	800	110	8,50
PA CC BZ 61	800 mm x 800 mm Plinth - Solid	600	800	110	8,50
PA CC BZ 81	800 mm x 1000 mm Plinth - Solid	800	1000	110	9,50
PA CC BZ 66 F	600 mm x 600 mm Plinth - Brushed	600	600	110	6,50
PA CC BZ 68 F	600 mm x 800 mm Plinth - Brushed	600	800	110	7,50
PA CC BZ 61 F	600 mm x 1000 mm Plinth - Brushed	600	1000	110	8,50
PA CC BZ 88 F	800 mm x 800 mm Plinth - Brushed	800	800	110	8,50
PA CC BZ 81 F	800 mm x 1000 mm Plinth - Brushed	800	1000	110	9,50
PA CC BZ 66 P	600 mm x 600 mm Plinth - Louvered	600	600	110	6,50
PA CC BZ 68 P	600 mm x 800 mm Plinth - Louvered	600	800	110	7,50
PA CC BZ 61 P	600 mm x 1000 mm Plinth - Louvered	600	1000	110	8,50
PA CC BZ 88 P	800 mm x 800 mm Plinth - Louvered	800	800	110	8,50
PA CC BZ 81 P	800 mm x 1000 mm Plinth - Louvered	800	1000	110	9,50

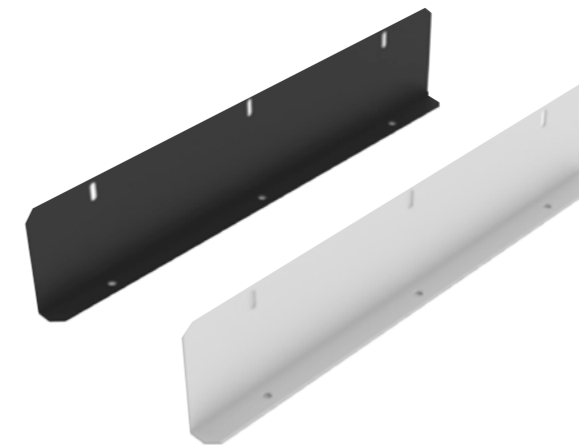
**CC Means=Color Code, BL=Rall 9005 Black, LG=Rall 7035 Light Gray

FLOOR FIXING BRACKET

- Designed for fixing of floor standing racks onto floor.
- It's also provide roll-over protection.
- It's made of steel and bracket length is based on rack width.
- Set include 1 pair of L bracket.

Color Options

- RAL 9005 - Black (Standard)
- RAL 7035 - White (Optional)



W600 Floor Fixing Bracket



W800 Floor Fixing Bracket

FLOOR FIXING KIT

Product Code	Product Description	Width (W) (mm)	Depth (D) (mm)	Height (H) (mm)	Weight (Kg)
PA CC DBK W60	W600 Floor Fixing Kit	500	27,5	107,5	1,00
PA CC DBK W80	W800 Floor Fixing Kit	700	27,5	107,5	1,50

**CC Means=Color Code, BL=Rall 9005 Black, LG=Rall 7035 Light Gray

FAN MODULES

Designed for floor standing and wall mount cabinets. Provides forced air ventilation by axial ball bearing fan that silent (max. 47dBA) and high volume (2.3 - 3.0 m3/min)

and long life.

Analog or digital thermostat provide managing of operating temperature set up values inside of the rack (0-35°C)



WALL MOUNTING TYPE FAN MODULES

Product Code	Product Description	Width (W) (mm)	Depth (D) (mm)	Height (H) (mm)	Weight (Kg)
PA CC WL FN 01	Fan Modules; 1 Fan,with On/Off switch control	340	190	40	1,40
PA CC WL FN 02	Fan Modules; 2 Fan,with On/Off switch control	340	190	40	1,80
PA CC WL FN T1	Fan Modules; 1 Fan,with Analog thermostat control unit	340	190	74	1,50
PA CC WL FN T2	Fan Modules; 2 Fan,with Analog thermostat control unit	340	190	74	1,90
PA CC WL FN DT1	Fan Modules; 1 Fan,with Digital thermostat control unit	340	190	74	1,50
PA CC WL FN DT2	Fan Modules; 2 Fan,with Digital thermostat control unit	340	190	74	1,90



19" RACK MOUNT FAN MODULES

Product Code	Product Description	Width (W) (mm)	Depth (D) (mm)	Height (H) (mm)	Weight (Kg)
PA CC RK FN 02	1U 19" Rack Mount 2 fans with On/Off switch control	483	320	40	2,90
PA CC RK FN 04	1U 19" Rack Mount 4 fans with On/Off switch control	483	320	40	3,70
PA CC RK FN T2	1U 19" Rack Mount 2 fans+Analog Thermostat	483	320	74	3,00
PA CC RK FN T4	1U 19" Rack Mount 4 fans+Analog Thermostat	483	320	74	3,80
PA CC RK FN DT2	1U 19" Rack Mount 2 fans+Digital Thermostat	483	320	74	3,00
PA CC RK FN DT4	1U 19" Rack Mount 4 fans+Digital Thermostat	483	320	74	3,80

**CC Means=Color Code, BL=Rail 9005 Black, LG=Rail 7035 Light Gray

FAN MODULES



FREE STANDING - ELEGANT NET / PRO & SERVER RACK

Product Code	Product Description	Width (W) (mm)	Depth (D) (mm)	Height (H) (mm)	Ağırlık (Kg)
PA CC ELG FN 02	Ventilation unit with 2 Fans+with On/Off switch control	400	400	40	2,70
PA CC ELG FN 04	Ventilation unit with 4 Fans+with On/Off switch control	400	400	40	3,80
PA CC ELG FN 06	Ventilation unit with 6 Fans+with On/Off switch control (For depth 1000mm cabinets)	400	550	40	5,30
PA CC SV RDFN 06	Rear door Ventilation unit with 6 Fans+with On/Off switch control	-	-	-	12,00
PA CC SV RDFN 12	Rear door Ventilation unit with 12 Fans+with On/Off switch control	-	-	-	24,00
PA CC ELG FN T2	Ventilation unit with 2 Fans+Analog Thermostat	400	400	40	2,80
PA CC ELG FN T4	Ventilation unit with 4 Fans+Analog Thermostat	400	400	40	3,90
PA CC ELG FN T6	Ventilation unit with 6 Fans+Analog Thermostat (Only for D:1000mm cabinets)	400	550	40	5,40
PA CC SV RDFN T6	Rear door Ventilation unit with 6 Fans+Analog Thermostat	-	-	-	12,10
PA CC SV RDFN T12	Rear door Ventilation unit with 12 Fans+Analog Thermostat	-	-	-	24,10
PA CC ELG FN DT2	Ventilation unit with 2 Fans+Digital Thermostat	400	400	40	2,80
PA CC ELG FN DT4	Ventilation unit with 4 Fans+Digital Thermostat	400	400	40	3,90
PA CC ELG FN DT6	Ventilation unit with 6 Fans+Digital Thermostat (Only for D:1000mm cabinets)	400	550	40	5,40
PA CC SV RDFN DT6	Rear door Ventilation unit with 6 Fans+Digital Thermostat	-	-	-	12,10
PA CC SV RDFN DT12	Rear door Ventilation unit with 12 Fans+Digital Thermostat	-	-	-	24,10
PA 00 SG	Digital heat screen				

**CC Means=Color Code, BL=Rail 9005 Black, LG=Rail 7035 Light Gray

ALUMINUM BODY PDU MODULES

The compact aluminum profile structure provides wide alternative plug types for customer needs. It could use as 19" 1U horizontal and up to 47U as vertical.

Optional socket type: Schuko, French, UK, C13, C19 and others
Optional plug type: Schuko, French, UK, C14, C20 and others

HORIZONTAL POWER DISTRIBUTION UNITS

SCHUKO TYPE - HORIZONTAL POWER DISTRIBUTION UNITS WITH CIRCUIT BREAKER

Product Code	Product Description	Width (W) (mm)	Depth (D) (mm)	Height (H) (mm)	Weight (Kg)
PA AL SCH CB03	1U 3 way power strip, 19" Aluminium profile, schuko type plug, 250vac, 1ea 16A circuit breaker 3.5kW, 2m power cord 3x1.5mm ² cable	483	44	44	0.70
PA AL SCH CB06	1U 6 way power strip, 19" Aluminium profile, schuko type plug, 250vac, 1ea 16A circuit breaker 3.5kW, 2m power cord 3x1.5mm ² cable	483	44	44	0.85
PA AL SCH CB09	2U 9 way power strip, 19" Aluminium profile, schuko type plug, 250vac, 1ea 16A circuit breaker 3.5kW, 2m power cord 3x1.5mm ² cable	483	44	44	1.30
PA AL SCH CB12	2U 12 way power strip, 19" Aluminium profile, schuko type plug, 250vac, 1ea 16A circuit breaker 3.5kW, 2m power cord 3x1.5mm ² cable	483	44	44	1.50
PA AL SCH DCB09	2U 9 way power strip, 19" Aluminium profile, schuko type plug, 250vac, 2x16A Dual circuit breaker 3.5kW, 2m power cord 3x1.5mm ² cable	483	44	44	1.50
PA AL SCH DCB12	2U 12 way power strip, 19" Aluminium profile, schuko type plug, 250vac, 2x16A Dual circuit breaker 3.5kW, 2m power cord 3x1.5mm ² cable	483	44	44	1.70

SCHUKO TYPE - HORIZONTAL POWER DISTRIBUTION UNITS WITH ON/OFF SWITCH

Product Code	Product Description	Width (W) (mm)	Depth (D) (mm)	Height (H) (mm)	Weight (Kg)
PA AL SCH SW03	1u 3 way power strip 19" Aluminium profile, schuko type plug 250vac, On/Off switch 2m power cord 3x1.5mm ² cable	483	44	44	0.65
PA AL SCH SW06	1u 6 way power strip 19" Aluminium profile, schuko type plug 250vac, On/Off switch 2m power cord 3x1.5mm ² cable	483	44	44	0.80
PA AL SCH SW08	1u 8 way power strip 19" Aluminium profile, schuko type plug 250vac, On/Off switch 2m power cord 3x1.5mm ² cable	483	44	44	0.90

IEC 320 / C13 TYPE - HORIZONTAL POWER DISTRIBUTION UNITS WITH CIRCUIT BREAKER

Product Code	Product Description	Width (W) (mm)	Depth (D) (mm)	Height (H) (mm)	Weight (Kg)
PA AL IEC CB06	1U 6 way power strip, 19" Aluminium profile, IEC320 type socket, 250vac, 1ea 16A circuit breaker 3.5kW, 2m power cord 3x1.5mm ² cable	483	44	44	0.80
PA AL IEC CB09	2U 9 way power strip, 19" Aluminium profile, IEC320 type socket, 250vac, 1ea 16A circuit breaker 3.5kW, 2m power cord 3x1.5mm ² cable	483	44	44	0.85
PA AL IEC CB12	2U 12 way power strip, 19" Aluminium profile, IEC320 type socket, 250vac, 1ea 16A circuit breaker 3.5kW, 2m power cord 3x1.5mm ² cable	483	44	44	1.30
PA AL IEC DCB09	2U 9 way power strip, 19" Aluminium profile, IEC320 type socket, 250vac, 2x16A Dual circuit breaker 3.5kW, 2m power cord 3x1.5mm ² cable	483	44	44	1.40
PA AL IEC DCB12	2U 12 way power strip, 19" Aluminium profile, IEC320 type socket, 250vac, 2x16A Dual circuit breaker 3.5kW, 2m power cord 3x1.5mm ² cable	483	44	44	1.50
PA AL IEC CB06SC	2U 12 way power strip, 19" Aluminium profile, IEC320 type socket, 250vac, 2x16A Dual circuit breaker 3.5kW, 2m power cord 3x1.5mm ² cable with Ampermeter screen	483	44	44	0.90

IEC 320 / C13 TYPE - HORIZONTAL POWER DISTRIBUTION UNITS WITH ON/OFF SWITCH CONTROL

Product Code	Product Description	Width (W) (mm)	Depth (D) (mm)	Height (H) (mm)	Weight (Kg)
PA AL IEC SW06	1U 6 way power strip, 19" Aluminium profile, IEC320 type socket, 250vac, On/Off switch, 2m power cord 3x1.5mm ² cable	483	44	44	0.70
PA AL IEC SW09	2U 9 way power strip, 19" Aluminium profile, IEC320 type socket, 250vac, On/Off switch, 2m power cord 3x1.5mm ² cable	483	44	44	0.80
PA AL IEC SW12	2U 12 way power strip, 19" Aluminium profile, IEC320 type socket, 250vac, On/Off switch, 2m power cord 3x1.5mm ² cable	483	44	44	1.25

UK TYPE POWER DISTRIBUTION UNITS WITH ON/OFF SWITCH CONTROL

Product Code	Product Description	Width (W) (mm)	Depth (D) (mm)	Height (H) (mm)	Weight (Kg)
PA 02 UK SW06	1U 6 way power strip, 19" Aluminium profile, UK type socket, 250vac, On/Off switch, 2m power cord 3x1.5mm ² cable	483	44	44	0.80

VERTICAL POWER DISTRIBUTION UNITS

SCHUKO TYPE - VERTICAL POWER DISTRIBUTION UNITS WITH CIRCUIT BREAKER

Product Code	Product Description	Width (W) (mm)	Depth (D) (mm)	Height (H) (mm)	Weight (Kg)
PA AL SCH DCB1842	42U 18 way power strip, Vertical Aluminium profile, schuko type plug, 250vac, 2x16A Dual circuit breaker 3.5kW, 2m power cord 3x1.5mm ² cable	44	44	1600	2.50
PA AL SCH DCB1836	36U 18 way power strip, Vertical Aluminium profile, schuko type plug, 250vac, 2x16A Dual circuit breaker 3.5kW, 2m power cord 3x1.5mm ² cable	44	44	1333	2.30
PA AL SCH DCB1226	26U 12 way power strip, Vertical Aluminium profile, schuko type plug, 250vac, 2x16A Dual circuit breaker 3.5kW, 2m power cord 3x1.5mm ² cable	44	44	889	2.15
PA AL SCH DCB2442	42U 24 way power strip, Vertical Aluminium profile, schuko type plug, 250vac, 2x16A Dual circuit breaker 3.5kW, 2m power cord 3x1.5mm ² cable	44	44	1600	2.50

IEC 320 / C13 TYPE - VERTICAL POWER DISTRIBUTION UNITS WITH CIRCUIT BREAKER

Product Code	Product Description	Width (W) (mm)	Depth (D) (mm)	Height (H) (mm)	Weight (Kg)
PA AL IEC DCB1842	42U 18 way power strip, Vertical Aluminium profile, IEC320 type socket, 250vac, 2x16A Dual circuit breaker 3.5kW, 2m power cord 3x1.5mm ² cable	44	44	1600	2.30
PA AL IEC DCB1836	36U 18 way power strip, Vertical Aluminium profile, IEC320 type socket, 250vac, 2x16A Dual circuit breaker 3.5kW, 2m power cord 3x1.5mm ² cable	44	44	1333	2.15
PA AL IEC DCB1226	26U 12 way power strip, Vertical Aluminium profile, IEC320 type socket, 250vac, 2x16A Dual circuit breaker 3.5kW, 2m power cord 3x1.5mm ² cable	44	44	889	2.15
PA AL IEC DCB2442	42U 24 way power strip, Vertical Aluminium profile, IEC320 type socket, 250vac, 2x16A Dual circuit breaker 3.5kW, 2m power cord 3x1.5mm ² cable	44	44	1600	2.50
PA AL IEC DCB2442SC	42U 24 way power strip, Vertical Aluminium profile, IEC320 type socket, 250vac, 2x16A Dual circuit breaker 3.5kW, 2m power cord 3x1.5mm ² cable with Ampermeter screen	44	44	1600	2.70



Designed for lighting inside of racks. It could be rack mountable or with magnetic mechanism. Also manage with door switch or on/off switch too.

LIGHTING MODULES

Product Code	Product Description	Width (W) (mm)	Depth (D) (mm)	Height (H) (mm)	Weight (Kg)
PA AL AYDNL A	Lighting Module on/off switch	483	44	22	0.60
PA AL AYDNL S	Lighting Module with door switch	483	44	22	0.65

L - TYPE SUPPORTER BRACKET



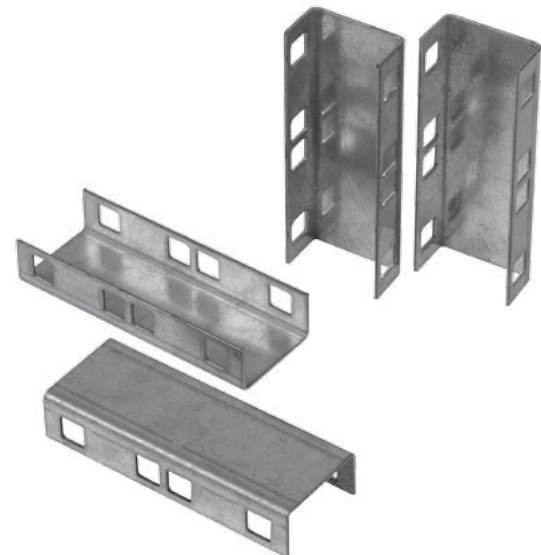
L type brackets are used when equipment mounted to the front rails needs additional weight support. Easy mountable and load carrying capacity is 100kgs. Made from zinc plated steel and 1 set includes 1 pair brackets.

Finishing

TS-914 Galvanized Sheet Steel

L TYPE SUPPORTER BRACKET

Product Code	Product Description	Width (W) (mm)	Depth (D) (mm)	Height (H) (mm)	Weight (Kg)
PA GL LTCDP D60	L Type Supporter Bracket D: 600 mm Depth Cabinets	60	280	44	0,30
PA GL LTCDP D80	L Type Supporter Bracket D: 800 mm Depth Cabinets	60	480	44	0,60
PA GL LTCDP D10	L Type Supporter Bracket D: 1000 mm Depth Cabinets	60	680	44	0,80



BAYING KIT

Designed for baying of chassis together without side panels. Each kit include 4 pcs U type brackets.

Finishing

TS-914 Galvanized Sheet Steel

BAYING KIT

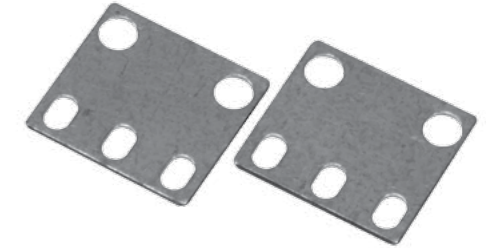
Product Code	Product Description	Width (W) (mm)	Depth (D) (mm)	Height (H) (mm)	Weight (Kg)
PA GL KBK	Baying Kit	38	19	100	0,10

21" to 19" CONVERTER BRACKET

Designed for 19" equipment mountings to 21" racks. Made from steel and 1 set includes 2 bracket.

Finishing

TS-914 Galvanized Sheet Steel



Product Code	Product Description	Width (W) (mm)	Depth (D) (mm)	Height (H) (mm)	Weight (Kg)
PA CC 21 19BP	1U 21" to 19" Converter Bracket	40	-	44	0,10
PA CC 21 19BP 2U	2U 21" to 19" Converter Bracket	40	-	44	0,20

FASTENER SETS

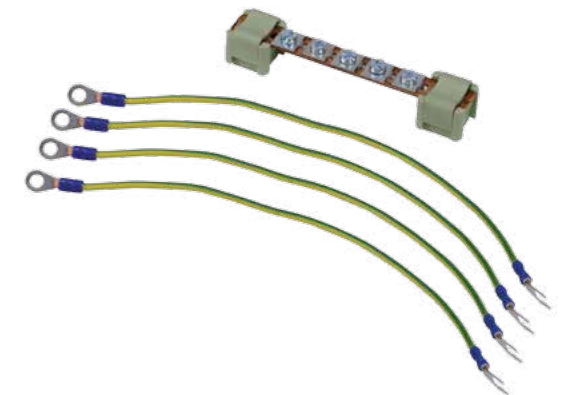
- M6x15mm Cross Recessed Pan Head Screw
- M6 Cage Nut
- Plastic washer



Product Code	Product Description	Weight (Kg)
PA 00 RK KS M6-20	M6 Cage Nut Midi Set (1 set=20pcs cage nut, screw and washer)	0,10
PA 00 RK KS M6-50	M6 Cage Nut Maxi Set (1 set=50pcs cage nut, screw and washer)	0,10
PA 00 RK KS M6-4	M6 Cage Nut Mini Set (1 set=4ea cage nut, screw and washer)	0,30

GROUNDING KIT

- Designed for providing of grounding continuity.
- 1 set includes 2pcs 50cm, 2pcs 80cm 2.5mm grounding cable with terminals, 2pcs isolator, 1 pcs copper busbar with 4 connection point.



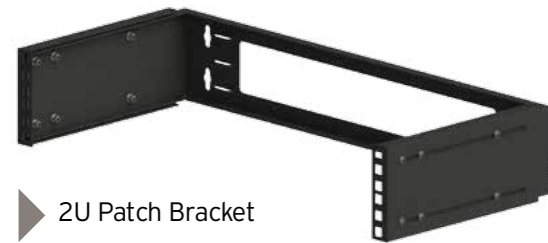
Product Code	Product Description	Weight (Kg)
PA 00 TPK 01	Grounding kit 6ea.earthing leads+copper busbar	0,20

PATCH BRACKET

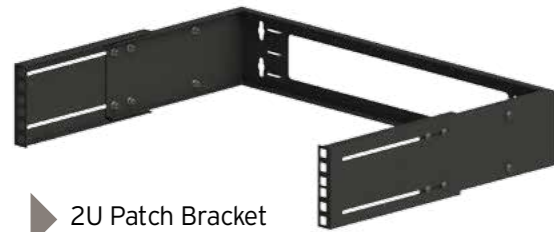
It is easy and economic solutions to fix onto wall for 19" rack mountable active or passive equipment. Load carrying capacity is 15kgs and changeable depth is extra features.

Color Options

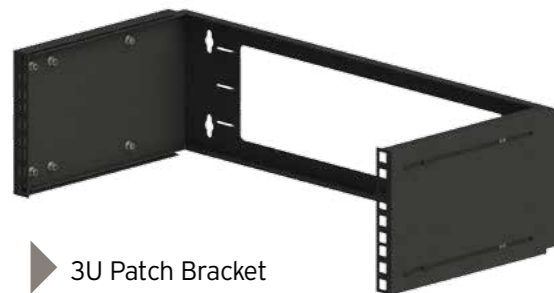
- RAL 9005 - Black (Standard)
- RAL 7035 - White (Optional)



2U Patch Bracket



2U Patch Bracket (Open)



3U Patch Bracket



4U Patch Bracket

PATCH BRACKET

Product Code	Product Description	Width (W) (mm)	Depth (D) (mm)	Height (H) (mm)	Weight (Kg)
PA CC PB 2U	2U 19" Patch Bracket	490	220 - 350	92	1,50
PA CC PB 3U	3U 19" Patch Bracket	490	220 - 350	137	2,00
PA CC PB 4U	4U 19" Patch Bracket	490	220 - 350	181	2,50

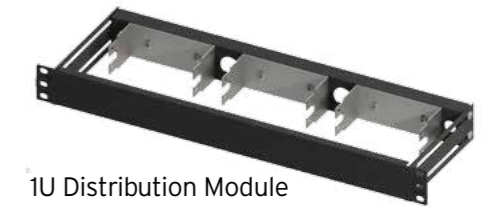
**CC Means=Color Code, BL=Rall 9005 Black, LG=Rall 7035 Light Gray

TELEPHONE DISTRIBUTION BOX

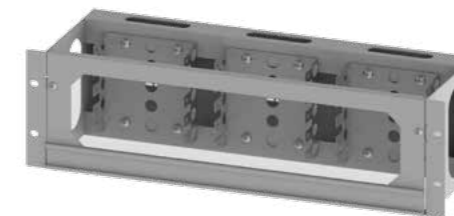
Designed for providing easy and sturdy termination of telecom cables inside and assembling of termination blocks. Also includes stainless steel frame for terminal block. It could be use as rack mountable and/or wall mountable.

Color Options

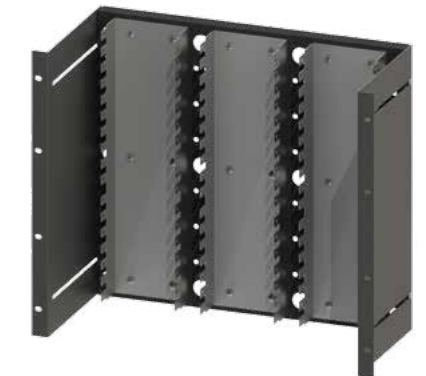
- RAL 9005 - Black (Standard)
- RAL 7035 - White (Optional)



1U Distribution Module



2U Distribution Module



9U Distribution Module



TELEPHONE DISTRIBUTION BOX

Product Code	Product Description	Width (W) (mm)	Depth (D) (mm)	Height (H) (mm)	Weight (Kg)
PA CC RC 1U	1U Telephone Distribution Module - 60 Pair (2 X 3)	483	150	44	1,40
PA CC RC 2U	2U Telephone Distribution Module - 120 Pair (4 X 3)	483	150	88	2,20
PA CC RC 9U	9U Telephone Distribution Module - 510 Pair (17 X 3)	483	150	400	7,80
PA CC TDP 3U	3U Telephone Distribution Module - 150 Pair (5 X 3)	483	150	133	2,80

**CC Means=Color Code, BL=Rall 9005 Black, LG=Rall 7035 Light Gray