



NanoSwitch™

Outdoor 4-Port PoE Passthrough Switch

Model: N-SW

(1) Gigabit 24V Passive PoE In Port

(3) Gigabit 24V Passive PoE Out Ports

Outdoor, Weather-Resistant Enclosure

NanoSwitch™

Overview

Introducing the Ubiquiti Networks® NanoSwitch™, an unmanaged switch with four Gigabit Ethernet ports. For its total non-blocking line rate, the NanoSwitch supports up to 4 Gbps.

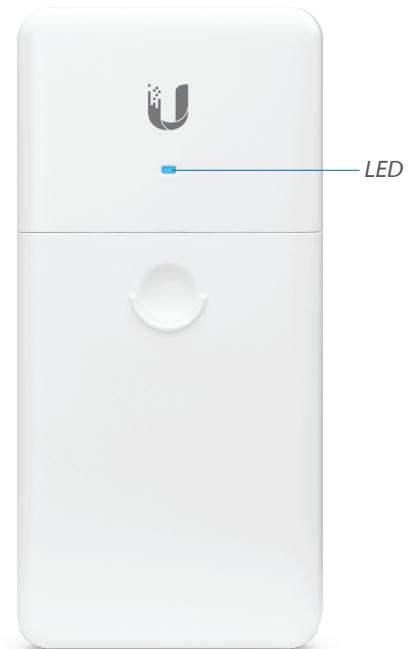
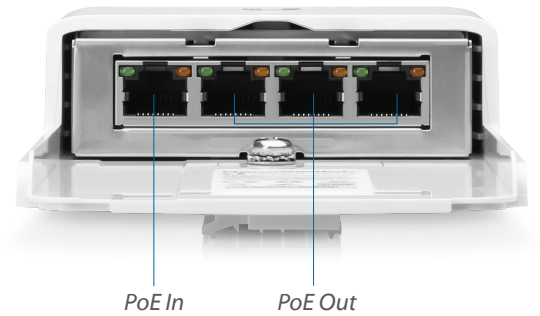
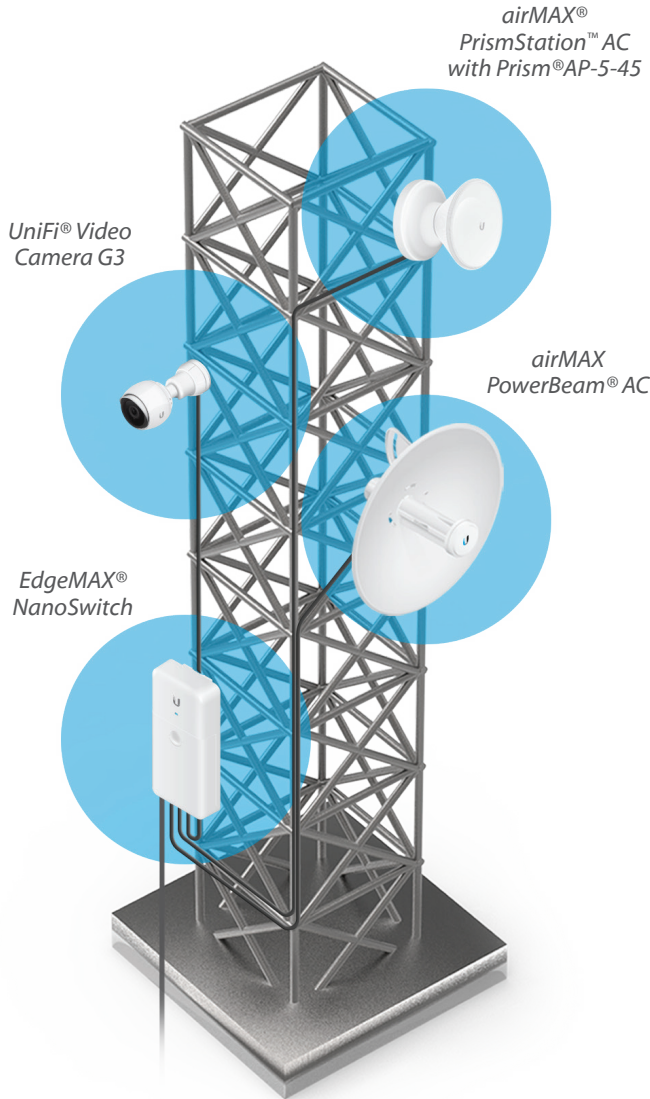
Hardware Features

Featuring a durable, weatherproof form factor, the NanoSwitch is ideal for outdoor deployment. For quick installation, the compact NanoSwitch can be easily mounted on a pole or wall.

Power over Ethernet

The NanoSwitch has four PoE ports:

Ports	Passive PoE
(1) PoE In	24V, 4-Pair
(3) PoE Passthrough	24V, 2-Pair



Specifications

N-SW	
Dimensions	196.4 x 93.5 x 32.4 mm (7.73 x 3.68 x 1.28")
Weight	271 g (9.6 oz)
Enclosure Characteristics	White Polycarbonate
Total Non-Blocking Line Rate	4 Gbps
Typical Power Consumption	1.5W
Passive PoE Max. Wattage per Port	24V, 2-Pair, 1A per Port (24W)
Total Passive PoE Max. Wattage	24V, 2-Pair, 1.5A for 3 Ports (36W)
Power Method	Passive 24V, 4-Pair PoE In
Passive PoE Voltage Range	21.6 - 26.4V
LEDs	Speed/Link/Activity (All Ports)
Networking Interfaces	(4) 10/100/1000 Mbps RJ45 Ports
PoE Interfaces	Passive 24V PoE In
ESD/EMP Protection	Air: ± 24 kV, Contact: ± 24 kV
Operating Temperature	-30 to 70° C (-22 to 158° F)
Operating Humidity	5 to 95% Noncondensing
Shock and Vibration	ETSI300-019-1.4 Standard
Certifications	CE, FCC, IC



Specifications are subject to change. Ubiquiti products are sold with a limited warranty described at: www.ubnt.com/support/warranty
 ©2017 Ubiquiti Networks, Inc. All rights reserved. Ubiquiti, Ubiquiti Networks, the Ubiquiti U logo, the Ubiquiti beam logo, airMAX, airOS, EdgeMAX, NanoSwitch, PowerBeam, Prism, PrismStation, and UniFi are trademarks or registered trademarks of Ubiquiti Networks, Inc. in the United States and in other countries. All other trademarks are the property of their respective owners.